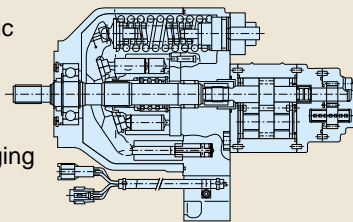




TB125



VARIABLE DISPLACEMENT, AXIAL PISTON, HYDRAULIC PUMPS WITH POWER SHIFT enable system flows and pressures to vary according to the load placed on the hydraulic system. The hydraulic system puts to work all of the available engine horsepower for maximum operating efficiency. The optimal combination of high digging forces and fast cycle times are continuously adjusted according to the variable digging loads encountered by the excavators.

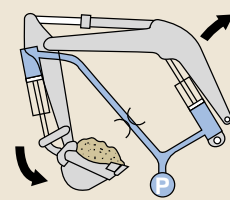
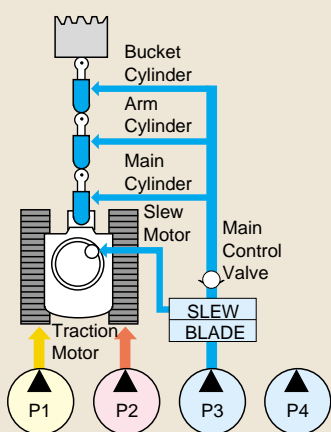


SIMULTANEOUS NON-INTERFERING HOE & TRAVEL OPERATION is now possible due to new technology. Straight Travel in normal Speed is kept even if two of hoe attachment actuators, such as Main, Arm, Bucket, are operated Simultaneously.

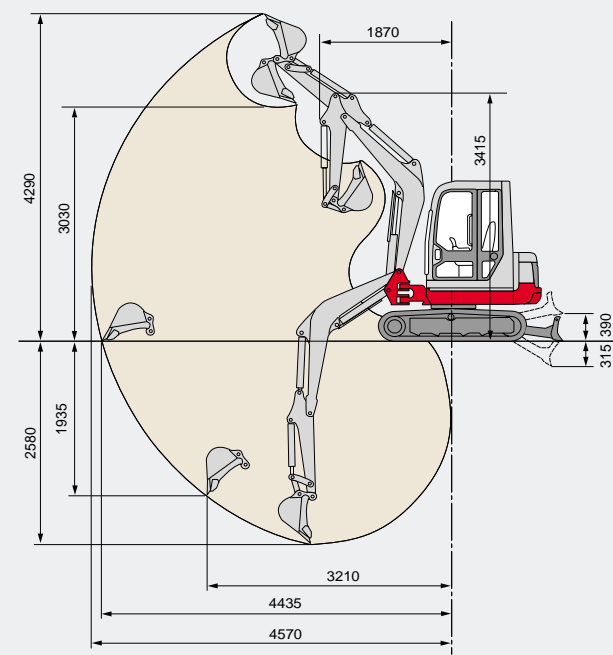
- P1...Traction(LH)
- P2...Traction(RH)
- P3...Main, Bucket, Arm.
- (P4...Pilot)

All Simultaneous Movements are operated smoothly in comfortable conditions.

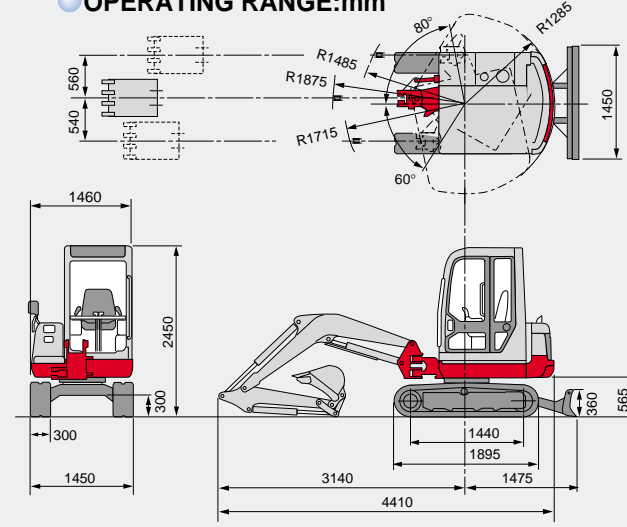
IMPROVED SIMULTANEOUS OPERATION OF THE BOOM AND BUCKET decrease cycle times.



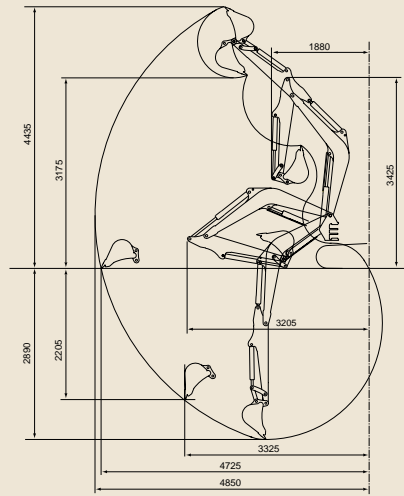
Standard Arm



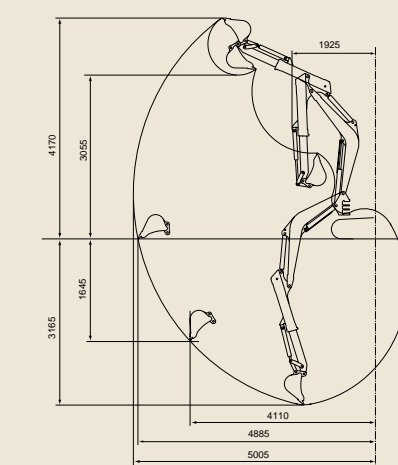
OPERATING RANGE:mm



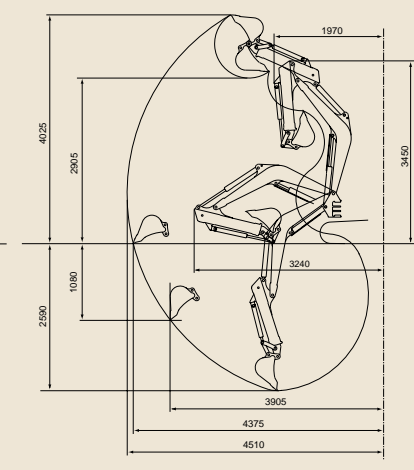
Long Arm(Optional)



Telescopic Arm(Optional)
Fully Extended Arm



Fully Retracted Arm



SPECIFICATIONS TB125 (Cab,Rubber Tracked,Breaker Piping Standard)(Steel Tracked: Option) (Tops/Fops Cabin/Canopy For Export)

WEIGHT: kg		Rear Slew Radius	1,285	OPERATING RANGE: mm	
Machine Weight	2,790	Min. Ground Clearance	300	Max. Dig. Depth	2,580
BUCKET		PERFORMANCES		Max. Vertical Dig. Depth	1,935
Bucket Capa. m ³	0.05(Struck)/0.07 (Heaped)	Traction Speed km/h	4.8/2.7	Max. Dump Height	3,030
Bucket Width mm	460	Upper Slew Speed rpm	9.6	Max. Dig. Height	4,290
DIESEL ENGINE (WATER-COOLED)		Gradeability deg/%	30/58	Max. Dig. Radius	4,570
Model	3TNE82A	Max. Dig. Power Bucket KN	20.6	Max. Floor Dig. Radius	4,435
Type	3CYL.4CYCL	Arm KN	14.7	Min. Slew Radius	1,485
Rated Output Kw	16.8/2,300rpm	Ground Press Kpa	29.3(30.7)	Max. Bucket Offset RH/LH	560/540
Max. Torque Nm	80-84	DOZER BLADE: mm		HYDRAULIC SYSTEM	
Displacement cc	1,330	Width x Height	1,450 x 360	Pump Type	Variable(P1+P2)+Gear(P3+P4)
Cool Water Capa. l	4.5	Operating Range up/down	390/315	Set Press	20.6 x 2+19.6 x 1+3.4 x 1
Lub. Oil Capa. l	Min2.7 Max3.9	OFF-SET DIG FUNCTION		Discharge (LPM)	29.0 x 2+19.8 x 1+10.4 x 1
Fuel Tank Capa. l	51	Type	Boom Swing	Breaker & Service Port (LPM)	48.8(LPM)
OVERALL DIMENSIONS: mm		Swing Angle RH/LH	60°/80°	Slew Motor	Axial Piston
Length (in transport)	4,410	TRACTION SYSTEM: mm		Traction Motor	Axial Piston
Width	1,460	Crawler (Track)	Rubber/Steel	Hydraulic Tank Capa. l	48.0
Height	2,450	Track Width : RT (ST)	300		



WORLD CREATOR OF COMPACT EXCAVATOR
TAKEUCHI MFG.CO.,LTD.

205-3,Uwadaira,Sakaki-machi,Hanisina-gun,
Nagano 389-0605,Japan
Phone 0268(81)1112
Telefax 0268(81)1121
Murakami Factory
Togura Factory
Sakaki Factory



Excluding Light Quater and Electric Type Excavator

In accordance with our established policy of constant improvement, we reserve the right to amend this specification at any time without notice. Printed in Japan. CAT 990650

TAKEUCHI
TB125

FULL HYDRAULIC COMPACT EXCAVATOR

TB125

Machine Weight:2790kg



TAKEUCHI

TAKEUCHI •• Leading the Way in Compact Excavators

Operator Comfort



* **AN ISOLATION MOUNTED PLATFORM** minimizes noise levels in the operators station for less operator fatigue and improved awareness of the machines operating functions.



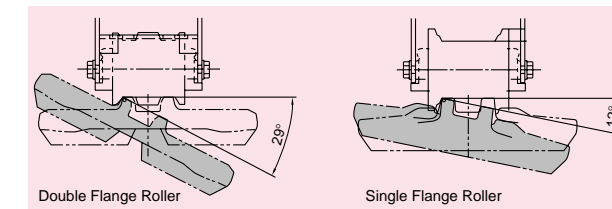
* **A RETRACTABLE SEAT BELT** insures easy operator access, and eliminates bothersome adjustments to properly fit the operator. Neatly stored seat belts encourage operator utilization of this critically important safety feature.



* **MULTI-ADJUSTABLE SUSPENSION SEAT** provides for long days productive operation with minimal operator fatigue.



* **SHORT PITCH RUBBER TRACKS** make for comfortable vibration free travel even on the roughest job sites.



* **DOUBLE-FLANGED TRACK ROLLERS** provide increased roller/rail contact. Stress on the rail is more evenly distributed for longer undercarriage life and the risk of track run-off when operating on slopes is virtually eliminated.

The new model TB125 excavator is the end result of years of research, field testing, customer evaluation and product refinement. Designed and engineered from the "ground up" with the latest in compact equipment technology, they firmly establish new standard for excavator performance, reliability, efficiency and ease of operation.

Safety



* **AN EMERGENCY ENGINE SHUT DOWN SYSTEM** automatically returns the engine to low idle speed in the event of an increase in engine coolant temperature and completely shuts down the engine in the event of abnormal decrease in engine lubrication pressure. An important feature which helps eliminate catastrophic engine failures due to abusive or unobservant operators.

* **BUCKET CYLINDER AND AUXILIARY CIRCUIT HOSES** are routed through boom bracket to virtually eliminate hose abrasion from narrow trench walls and debris.



* Console safety lockouts disable the console mounted operating controls for safe entry and exit from the machine.

* **A CAST IRON WRAP AROUND COUNTERWEIGHT** protects the engine compartment from accidental damage when slewing (swinging) in confined areas.



* **REAR MOUNTED WORK LIGHTS** improve job site safety conditions by visually alerting anyone entering the excavators area.

* **DISC TYPE PARKING BRAKES, SPRING-APPLIED, HYDRAULICALLY RELEASED,** for travel and slew motors supplied as standard equipment are automatically applied when motors are not in operation.



Serviceability

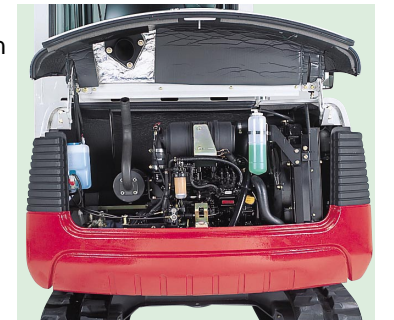
* **THE OPERATORS PLATFORM** is quickly and easily raised for optimum machine serviceability. Maintenance and repair time are significantly reduced through quick and unencumbered access to the starter, alternator, battery, engine oil filter, slew motor and reduction unit, swivel joint, main control valve and hoses.

* **A GREASE GUN STORAGE COMPARTMENT** is provided to help insure proper maintenance.



Environmental Sensitivity

* **NEW SERIES ENGINES** significantly reduce noise emission levels for minimal disturbance in urban areas and comply with the most stringent Worldwide exhaust emission standards.



Ease of Operation

* **ELECTRO OVER HYDRAULIC CONTROL OF THE AUXILIARY HYDRAULIC CIRCUIT** is located at the left hand(LH) joystick control for convenient and comfortable operation of hydraulic attachments.



* **A ONE TOUCH ENGINE DECELERATOR WITH RETURN TO PRESET ENGINE SPEED** is located on the right hand(RH) joystick control. It aids in reduced fuel consumption when the excavator is temporarily idle.

* **TRAVEL SPEED SWITCH** is located at the right hand(RH) travel lever for easy change to 2nd(high) speed.



Options

* **TKB101 HYDRAULIC BREAKERS** properly matched to the machine flow, pressure, and working capacity, enables the excavator to efficiently perform concrete breaking and demolition work.

* **EMERGENCY ALARM EQUIPPED BOOM HOLDING VALVE** provides for maximum safety when the excavator is used craning applications or working with men in the trench.

* **TRAVEL ALARM** is available as an optional safety precaution to audibly alert anyone in the excavators work area of any machine movement.

* **EASY LEVER PATTERN CHANGE SELECTOR VALVE** provides for quick change of operation control patterns to accommodate operator preference.

* **LONGER STICK ARM** is available for wider working range.

* **TELESCOPIC ARM** is available for the longest reach to increase the working range.

